



Short & Long Term Property Management



North Adelaide

2 2 1

Located on a tranquil street in the sought-after suburb of North Adelaide, just steps away from O'Connell Street's cafe and shopping precinct, Gorgeous George offers an executive-style residence with unparalleled convenience. With close proximity to Adelaide Oval, the North Park Lands, and within walking distance to the Adelaide CBD, it epitomizes the epitome of refined urban living.

How does a weekend breakfast at the Mylk Bar sound? then a mid-morning coffee at Cibo, followed by lunch at Ruby Red Flamingo or Gin Long, then dinner and a drink at the Archer Hotel? all just a short stroll away.

The space
A private and secure two storey residence with 2 double

Type : Townhouse

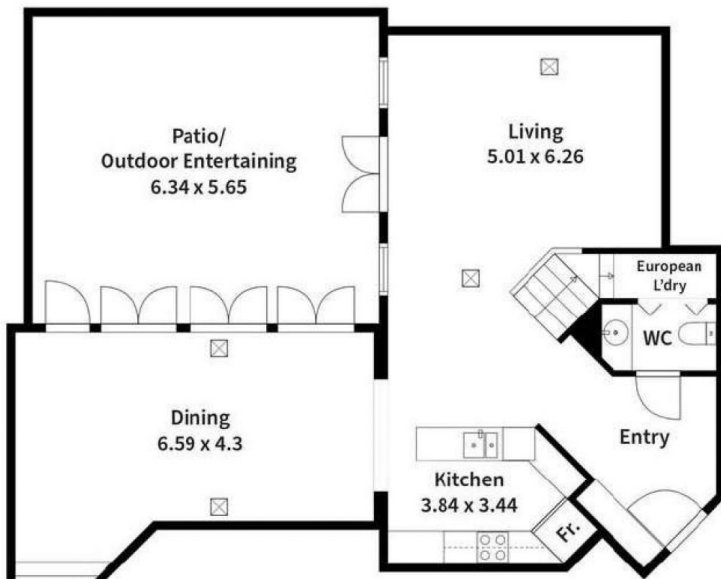
View : <https://www.pennyriggspm.com.au/lease/sa/adelaide/north-adelaide/holiday/townhouse/8091965>



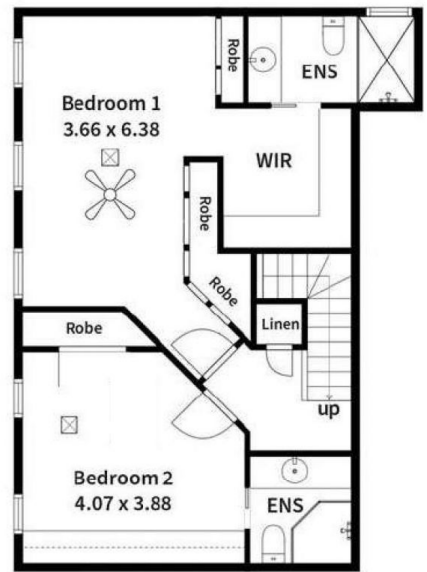
Rachel Burton - PR Short Stays
08 8353 0932

[For full version visit the website](https://www.pennyriggspm.com.au)

<https://www.pennyriggspm.com.au>



First floor



Second floor

